



## PRODUCT APPLICATION

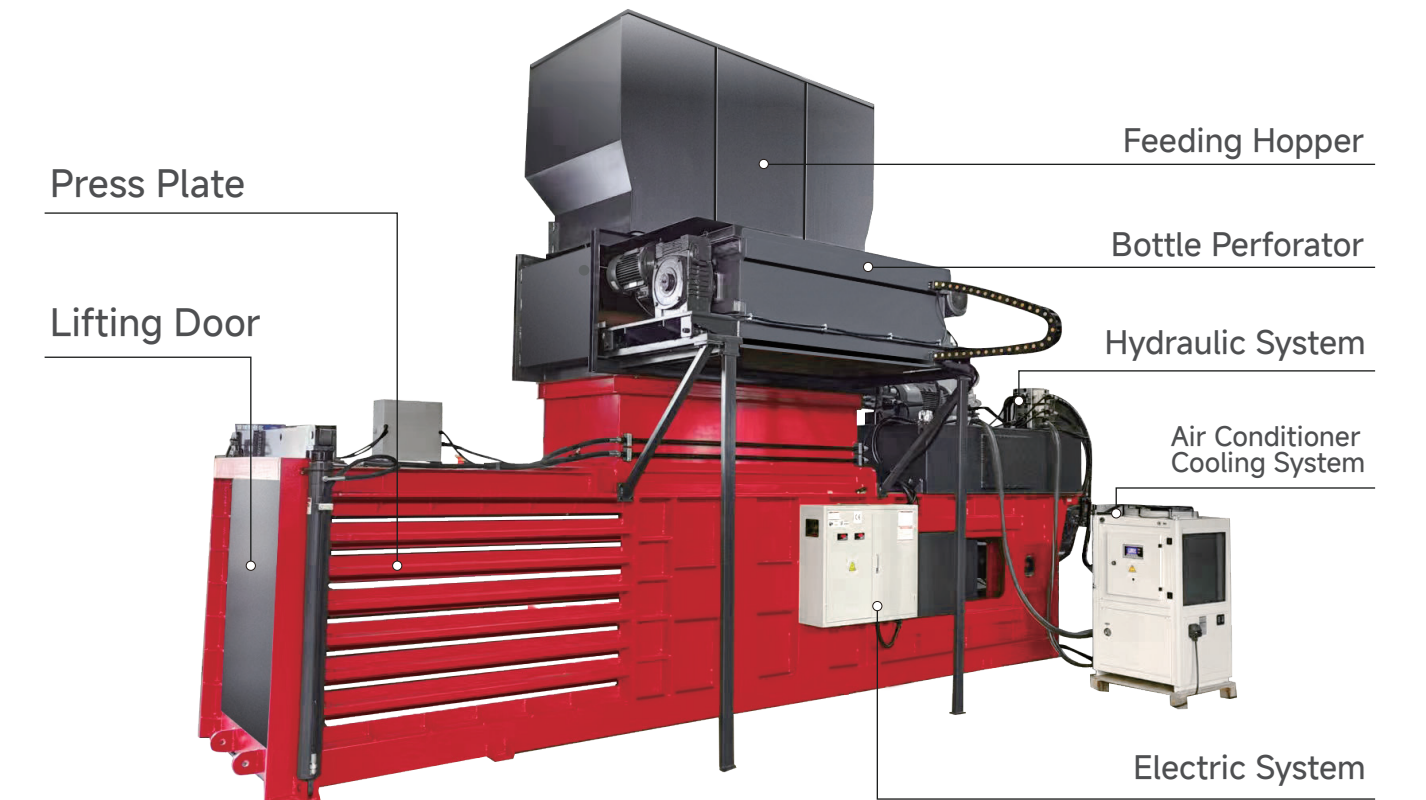
RECYQUIP Closed Door Horizontal Baler with high safety and high efficiency, able to process high volumes of recyclable materials such as paper,cardboard and plastics,ideal for companies with a large amount of daily waste to handle.



## MACHINE STRUCTURE

RECYQUIP Closed Door Horizontal Baler , supply **stable** and **reliable** baling solution for end users.

Feeding materials by steel chain feeding conveyor efficiently, with automatic compression and manual bale tying, it ensures high production efficiency and easy operation.



- Materials been pressed into stable and compact bales by RECYQUIP Closed Door Horizontal Baler,which are easy and safe to stack,requiring less storage space. The bale length and bale are adjustable,bales can be tied when the bale length meet.
- RECYQUIP Closed Door Horizontal Baler are CE marked and designed by customer requirements,making your waste management a simple and cost efficientprocess.

## CLOSED DOOR HORIZONTAL BALER



# PRODUCT DETAILS



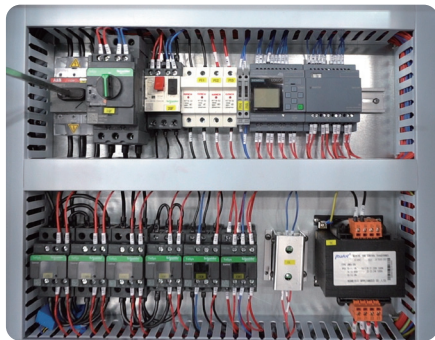
## 01 Machine Body

- All In One Machine Structure Design, reducing installation cost.
- With high quality steel plates and stable machine structure, ensure machine safety, durable and longer service life.



## 02 Hydraulic System

- Europe Design hydraulic system, efficiency and stable
- International Top Brands Motor, Pump, Valve and Hoses
- Air Conditioner Cooling System capable to handle 24/7 operations



## 03 Electric System

- SCHNEIDER electric system
- SIEMENS PLC
- European CE Certification and International ISO Certification



## 04 Safety Protection System

- Overload Protection: When overloaded, the electric power will be cut off automatically to avoid equipment damage or fire.
- Emergency Stop Button: you can press the emergency stop button immediately to cut off the electric power when in emergency.
- Protect the safety of equipment and operators comprehensively to ensure the production process smoothly.

# SUCCESS CASE



# TECHNICAL SPECIFICATION

Model	Press Force (Tons)	Bale Size (mm)( WxH )	Bale Weight (kgs)	Motor (KW)	Capacity (Bales/hour)	Machine Size (m) (L x W x H)
RMB40-9090	40	900×900	250-350	15	6	5.6×1.2×2.0
RMB63-11070	60	1100×700	450-500	22	6	6.0×1.3×2.0
RMB80-11075	80	1100×750	650-750	30	6	7.0×1.5×2.2
RMB100-110110	100	1100×1100	950-1050	30	6	9.5×1.8×3.2
RMB120-110130	120	1100×1300	1150-1250	37	6	10×1.85×3.5
RMB150-110130	150	1100×1300	1250-1350	55	6	10×1.85×3.5

[www.recyquip.co.za](http://www.recyquip.co.za)

Add  
Unit 13, Unifront Industrial Park, Cnr. Dekema & Black Reef Road  
Wadeville, Gauteng, South Africa

Email  
[info@recyquip.co.za](mailto:info@recyquip.co.za)